

IRONMAN Shoulder Armor - Template

made by **Creative Cosplays Magazine**

creativecosplays.com

@creative.cosplays / @creativecosplaysmag

For Personal use only

Patterns shown are set up to fit on 8.5x11 sheets of paper and craft foam

Current patterns will fit head size 22"

Increase Tile Scale to 105% for larger heads.

Decrease Tile Scale to 95% for smaller heads.

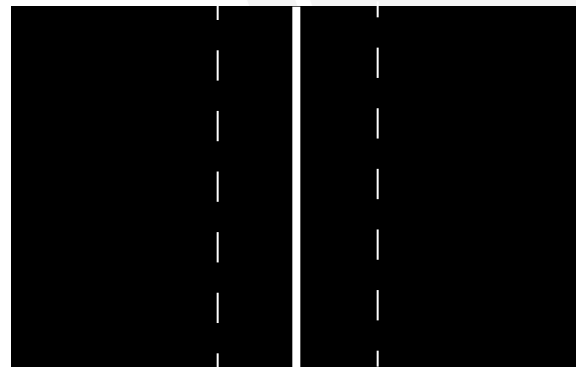
Directions

- Cut and transfer patterns onto 5mm craft foam
- Cut foam according to notes listed on patterns
- Use heat gun for better forming before gluing.
- Glue pieces together by matching numbers and letters from pattern. No Particular Order.
- Once assembled and finished, take a photo and send us a photo of how it turns out.
- Be sure to tag us @creativecosplays if posting on instagram.



Cutting Terms

V Under Cut



Draw line on underside of the foam where indicated.

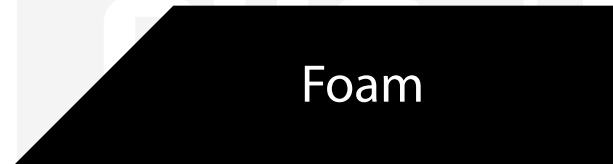
Make outward cuts parallel to cut line.

DO NOT cut all the way through the foam.

Glue inside V cut and close the V.

Outward Cut

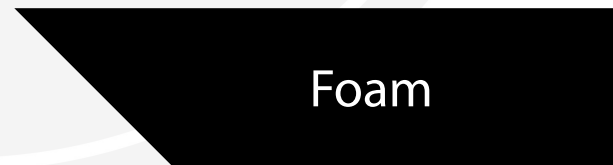
Cut line



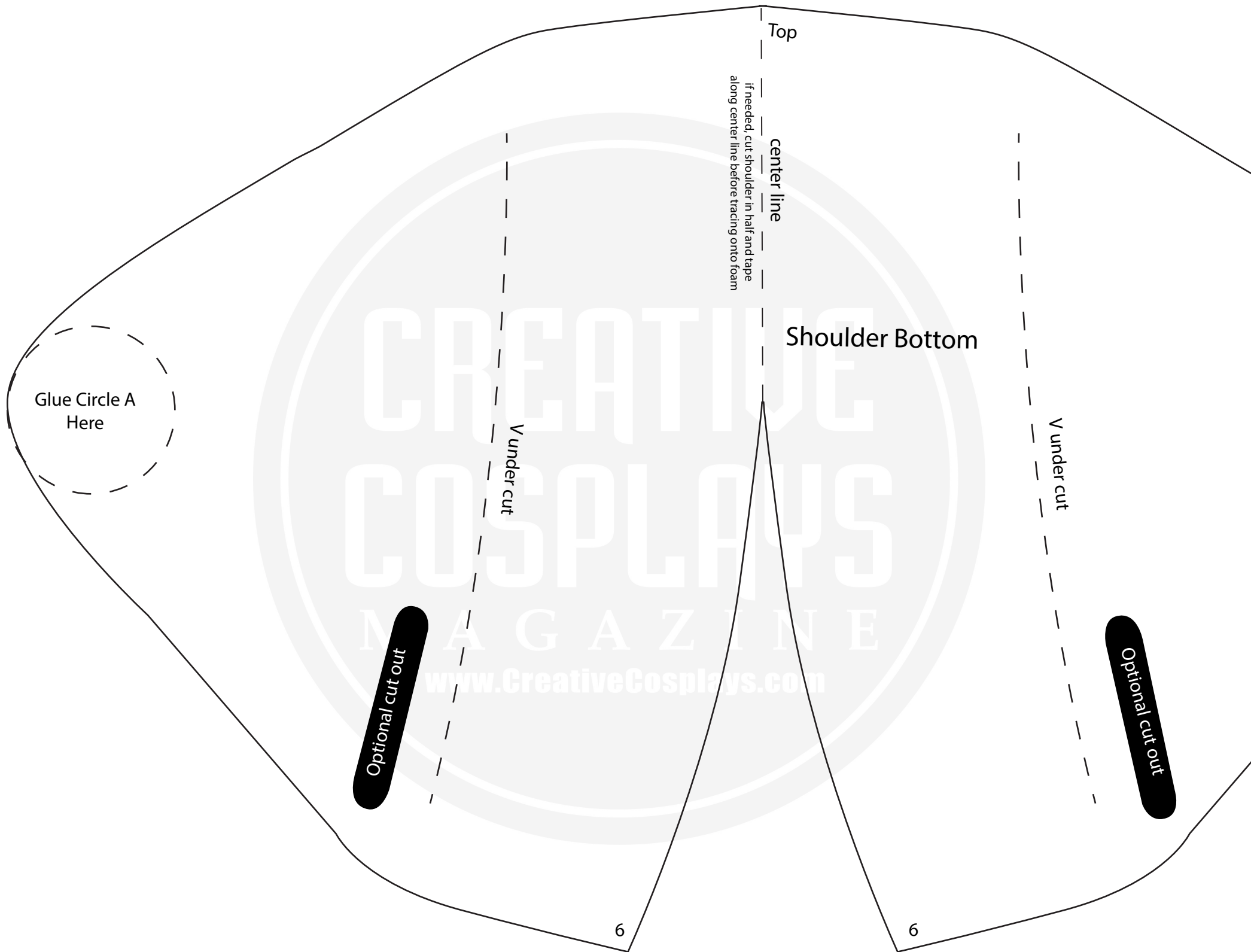
Angle cutting blade at an outward angle while following cut path

Inward Cut

Cut line



Angle cutting blade at an inward angle while following cut path



Top

center line

if needed, cut shoulder in half and tape
along center line before tracing onto foam

Shoulder Bottom

Glue Circle A
Here

V under cut

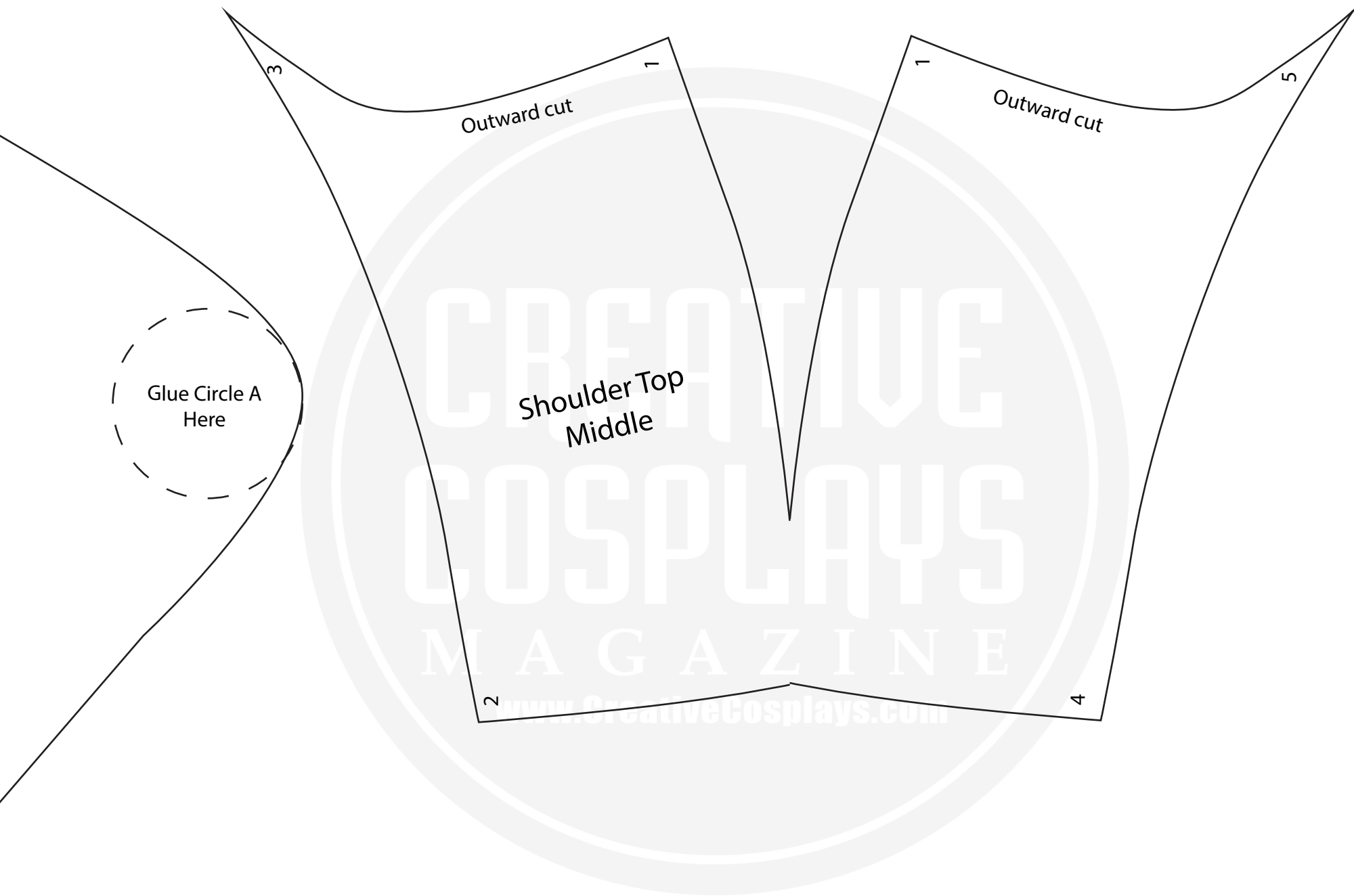
V under cut

Optional cut out

Optional cut out

6

6



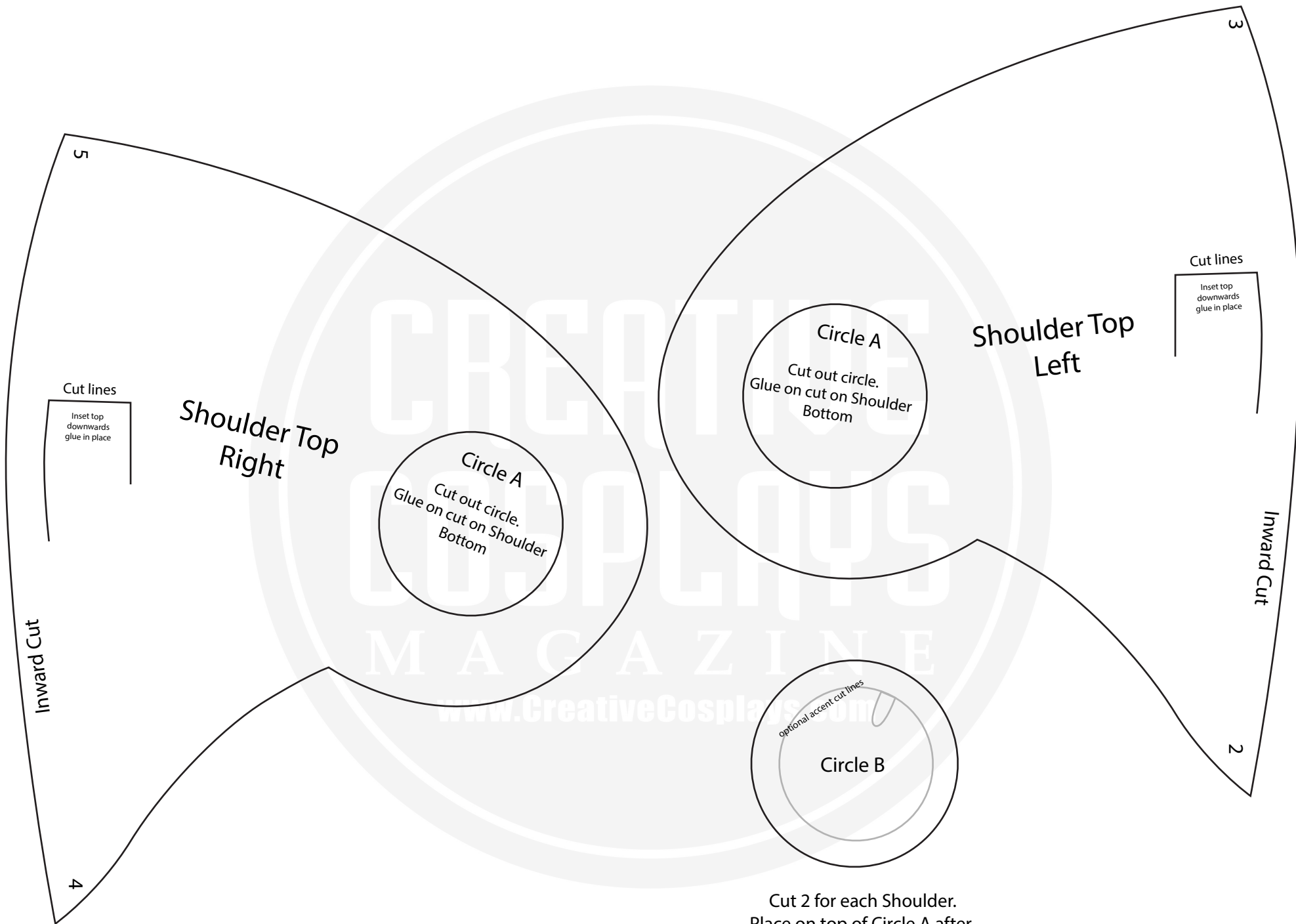
Outward cut

Outward cut

Glue Circle A
Here

Shoulder Top
Middle

CREATIVE
COSPLAYS
MAGAZINE
www.CreativeCosplays.com



Cut 2 for each Shoulder.
Place on top of Circle A after
Shoulder Top is on Shoulder Bottom